



PDH-Pro.com

## Wind Power for Utility Applications

**Course Number:** SU-02-701

**PDH:** 3

**Approved for:** AK, AL, AR, DE, FL, GA, IA, ID, IL, IN, KS, KY, LA, MD, ME, MI, MN, MO, MS, MT, NC, ND, NE, NH, NJ, NM, NV, NY, OH, OK, OR, PA, SC, SD, TN, TX, UT, VA, VT, WI, WV, and WY

### State Board Approvals

Florida Provider # 0009553 License #868

Indiana Continuing Education Provider #CE21800088

Maryland Approved Provider of Continuing Professional Competency

New Jersey Professional Competency Approval #24GP00025600

North Carolina Approved Sponsor #S-0695

NYSED Sponsor #274

### How Our Written Courses Work

This document is the course text. You may review this material at your leisure before or after you purchase the course.

After the course has been purchased, review the technical material and then complete the quiz at your convenience.

A Certificate of Completion is available once you pass the exam (70% or greater).

If a passing grade is not obtained, you may take the quiz as many times as necessary until a passing grade is obtained).

If you have any questions or technical difficulties, please call (508) 298-4787 or email us at [admin@PDH Pro.com](mailto:admin@PDH Pro.com).





## Module 1: Introduction

### Learning Objectives

By the end of this section, you will be able to:

- **Identify** the unique operational characteristics of wind power plants compared to conventional synchronous generation.
- **Evaluate** the necessity of high-resolution, long-term wind data for power system planning and stability analysis.
- **Recognize** the objectives of the NREL monitoring project in mitigating market barriers for wind integration.

*Executive Summary:* The rapid expansion of U.S. wind capacity—surpassing 6,000 MW—requires utility planners to move beyond conservative "worst-case" assumptions by utilizing actual, high-resolution (1 Hz) performance data to understand fluctuations, spatial diversity, and system impacts.

### Market Context and Technical Barriers

Over the last two decades, U.S. wind power capacity has seen continuous growth, driven largely by **federal tax credits** and emerging **green markets**. Despite reaching a total installed capacity exceeding **6,000 MW**, the industry continues to face significant market barriers. These barriers often stem from a lack of utility experience with wind technology and growing concerns regarding the impact of **output fluctuations** on system operations.

### Operational Characteristics of Wind Power

Large-scale wind installations are subject to increased scrutiny due to characteristics that differ fundamentally from traditional power plants:

- **Variable Output:** Wind power generation is intrinsically tied to **wind speed**, leading to continuous fluctuations.
- **Generator Technology:** Unlike conventional central-station plants utilizing large **synchronous generators**, wind plants typically employ numerous, relatively small **induction generators**.
- **System Stability Concerns:** Planners must account for these unique behaviors to maintain proper **system regulation** and stability.

**⚠ Safety Constraint:** Without high-frequency data and realistic plant models, utilities are often forced to rely on **conservative assumptions** and **worst-case scenarios** for engineering decisions, which may lead to inefficiencies or unnecessary system constraints.

### The NREL Monitoring Project

To provide a technical remedy for the industry's data gap, the **National Renewable Energy Laboratory (NREL)** initiated a project to record long-term, **high-resolution (1 Hz)** data.

## Project Objectives

- **Systematic Collection:** Gather actual output data from large commercial wind plants across various regions.
- **Technical Analysis:** Evaluate **frequency distribution**, the benefits of **spatial diversity**, and the provision of **ancillary services**.
- **Industry Support:** Provide **nonproprietary data** to support system planning and operating impact studies across different wind regimes.



**Figure 1-1.** Locations of monitored wind power plants

## Data Methodology

NREL's monitoring project currently collects data from seven distinct locations. The recording parameters include:

- **Resolution:** Power data is recorded at a frequency of **1 Hz** (one-second intervals).
- **Ancillary Measurements:** At the Southwest Minnesota (SW Minn.) site, **one-minute average wind speeds** are recorded at hub height from on-site meteorological towers.
- **Compiled Series:** The raw 1-second and 1-minute data are used to generate **1-minute, 10-minute, and 1-hour time-series** for comprehensive analysis.

**Design Tip:** Utility planners should utilize these high-resolution data series to transition from theoretical modeling to data-driven system integration studies, reducing the uncertainty associated with wind plant behavior.

---

*Checkpoint Quiz*

---

**1. Why do wind power plants behave differently during system disturbances compared to conventional central-station power plants?**

- a) They utilize larger synchronous generators.
- b) They utilize many relatively small induction generators.
- c) They are independent of wind speed.
- d) They have higher inertia than thermal plants.

**Answer:** (b). Wind plants use induction generators which behave differently than the large synchronous generators found in traditional plants.

**2. What is a primary risk of planning wind integration without high-frequency wind power data?**

- a) Overestimation of annual tax credits.
- b) Reliance on overly conservative engineering assumptions and worst-case scenarios.
- c) Reduction in the number of required induction generators.
- d) Guaranteed system stability without additional modeling.

**Answer:** (b). Without realistic models and data, planners lack the detail needed for precise decisions, leading to conservative "worst-case" modeling.

**3. What is the primary recording frequency used in the NREL monitoring project to capture high-resolution wind power output?**

- a) 1 minute
- b) 1 hour
- c) 1 Hz (1 second)
- d) 10 minutes

**Answer:** (c). NREL records data at 1 Hz to systematically collect actual fluctuations for analysis.

## Module 2: Statistics of Wind Time-Series Data

### Learning Objectives

By the end of this section, you will be able to:

- **Analyze** wind speed variability across different time scales to determine impacts on power plant behavior.
- **Evaluate** the relationship between data resolution and the standard deviation of wind speed step changes.
- **Specify** the data requirements for accurate site-specific power generation potential estimation.

*Executive Summary:* Wind speed variability is a multi-scale phenomenon driven by atmospheric pressure and surface characteristics; while average monthly wind speeds remain stable regardless of data resolution, short-term step change statistics (particularly at the 1-second interval) are critical for understanding high-frequency power fluctuations and require site-specific, hub-height measurements for valid engineering analysis.

### Atmospheric Drivers of Wind Variability

Wind is a dynamic vector driven by **atmospheric pressure differences** across the earth's surface. These differences result from:

- **Uneven Solar Heating:** The sun warms the earth's surface at varying rates.
- **Oceanic Heat Transfer:** Heat transferred via ocean currents influences air temperature and pressure.
- **Surface Friction:** Near the ground, air movement is significantly modified by the specific **characteristics of the earth's surface**.

For the purposes of wind generation, **wind speed** is the primary attribute of interest due to its direct impact on power plant behavior and output stability.

### Analyzing Time-Series Resolution

The perceived behavior of wind speed changes significantly depending on the **time scale** of the observation. To illustrate this, consider the following time-series resolutions:

- **1-second:** 1,800 data points.
- **1-minute:** 1,440 data points.
- **10-minute:** 1,440 data points.
- **1-hour:** 720 data points.

While general traces are similar across resolutions, the **1-second series** appear significantly "smoother" because wind speed changes occurring over such a brief interval are naturally small.

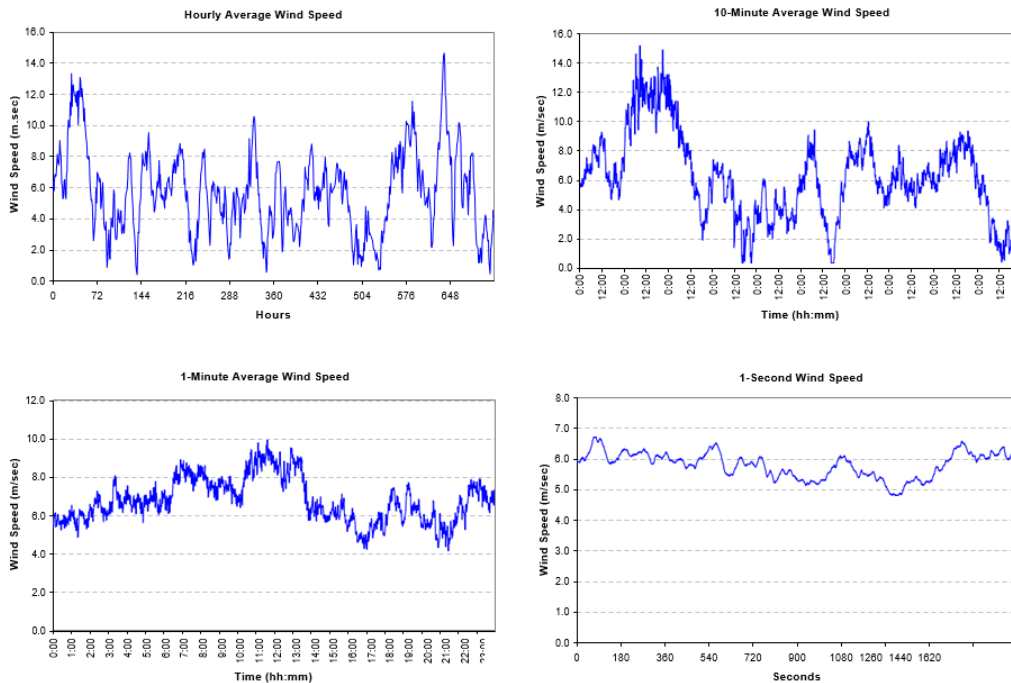



Figure 2-1. Sample wind speed profiles at different time intervals

### Step Change Statistics

A **step change** is defined as the difference in wind speed between two consecutive time steps. Evaluating these changes provides a boundary for expected wind power ramping.

Table 2-1. Standard Deviation of Wind Speed Step Changes

	1-second	1-minute	10-minute	1-hour
Step Change Standard Deviation (m/sec)	0.07	0.55	0.53	0.88

 **Calculation Note:** The variance of 1-second wind speed step changes is typically one magnitude smaller than that of longer time steps. This confirms that 1-second wind power step changes should be relatively small in magnitude.

### Site Characterization and Long-Term Averages

Statistical averages for a site remain remarkably consistent regardless of the time resolution used for data collection, provided the duration of the study (e.g., one month) is sufficient.

Table 2-2. Sample Monthly Average Wind Speed

	1-second	1-minute	10-minute	1-hour
Average Wind Speed (m/sec)	5.69	5.69	5.69	5.69
Standard Deviation (m/sec)	2.80	2.77	2.72	2.68



Purchase this course to  
see the remainder of  
the technical materials.